

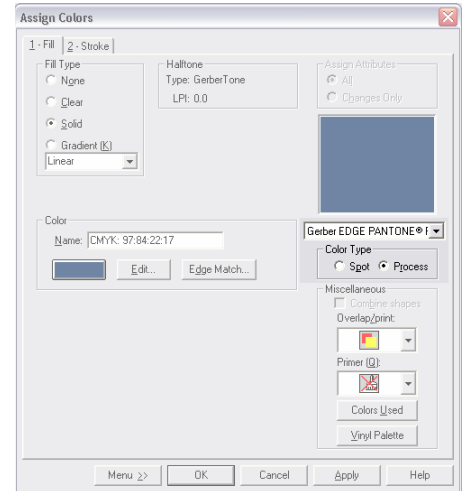


Item #1 Gerber Edge Pantone Process Palette

TIP:

A quick way to access the Assign Color dialog box is by pressing the [1] key

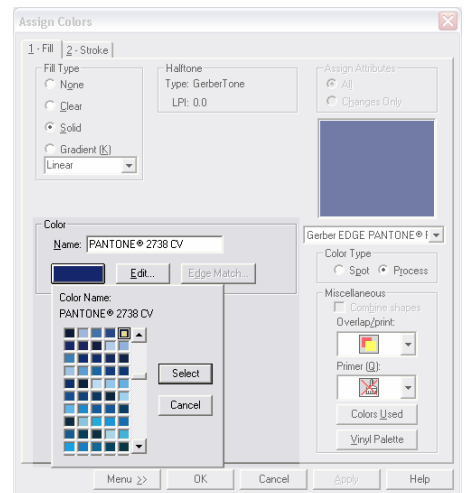
When doing four color process (CMYK) output and attempting to “match” Pantone Matching System (PMS) colors, use Gerber’s “Gerber EDGE PANTONE Process” palette. This palette contains over 700 matches with values that produce a much closer “match” then using other source values. From within the Assign Color dialog box, in the Color Type section, select *Process*. Then, from the drop down directly above this section, chose *Gerber EDGE PANTONE Process* as the palette to load.



TIP:

Insert the “®” symbol by holding the [ALT] key and entering 174 from the numeric keypad

There are two ways to select the desired Pantone number. First, and perhaps the quickest if proper format is known, is to type the complete name in the *Name* area within the *Color* section. Proper format takes the form of “PANTONE® xxx CV” where “xxx” is the number desired. This is perhaps a little more convenient for “numbered” numbers like “PANTONE® 210 CV” verse “named” numbers like “PANTONE® Proc Cyan CV”.



The other approach is to left click on the color swatch located within the *Color* section, within the *Color* section mentioned above. This reveals a scrollable swatch menu that contains all matched values, listed in a logical fashion.

TIP:

Having a Pantone Solid to Process guide available when meeting with clients can help illustrate the differences, and some possible pitfalls, of using four color process output.

Test it out for yourself. Pick any Pantone number, select it as described above, then create a duplicate object and assign it values from another source. Perhaps using the values provided in the Pantone Solid to Process. Which one looks closer?